



Faculty feedback report 2019-20

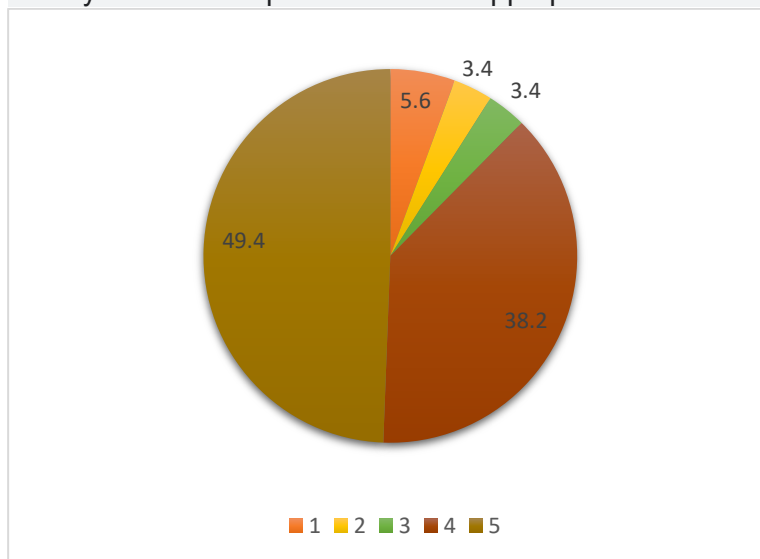
Feedback back was collected from the faculty members with the help of questionnaire based on satisfaction on curriculum design, syllabus and over all institution activities. The data collected is analysed with the help of percentage and shown with the help of chart and graph.

For each item there are range of score i.e., 1 to 5. the score indicates the following level of satisfaction :1-Completely Disagree, 2-Disagree ,3-Neither agree nor disagree, 4-Agree ,5-Completely agree.

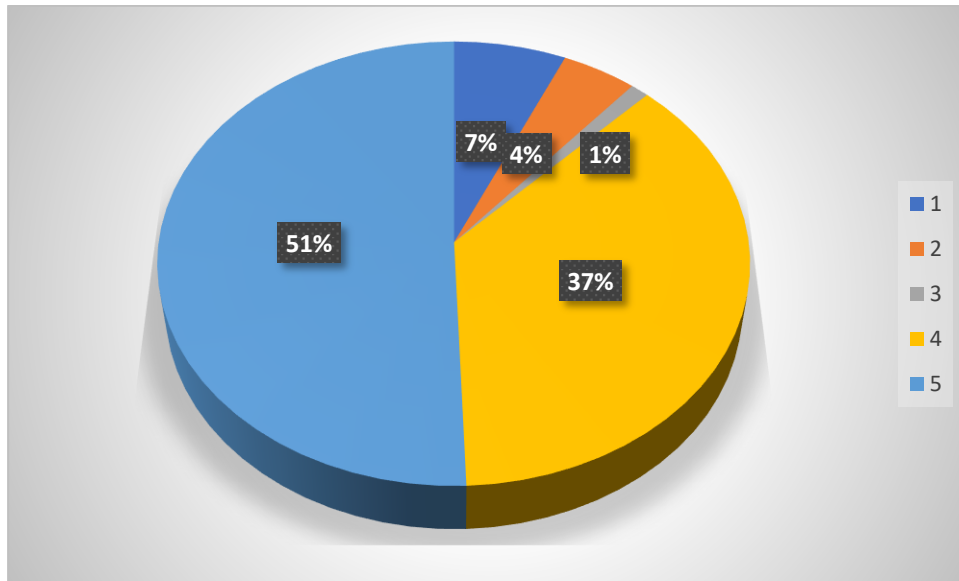
The analysis of the feedback collected from faculty members are as under:

Faculty feedback report on syllabus

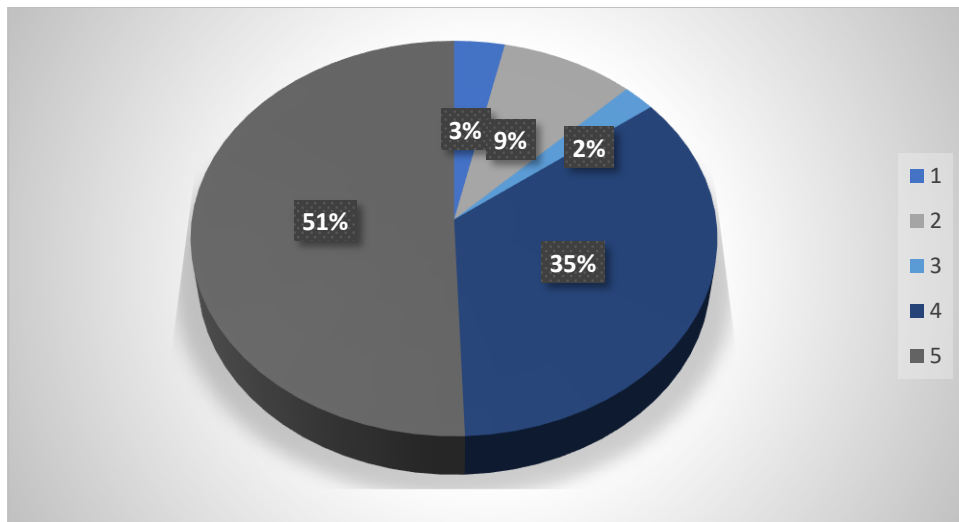
1. The syllabus is comprehensive and appropriate to the course



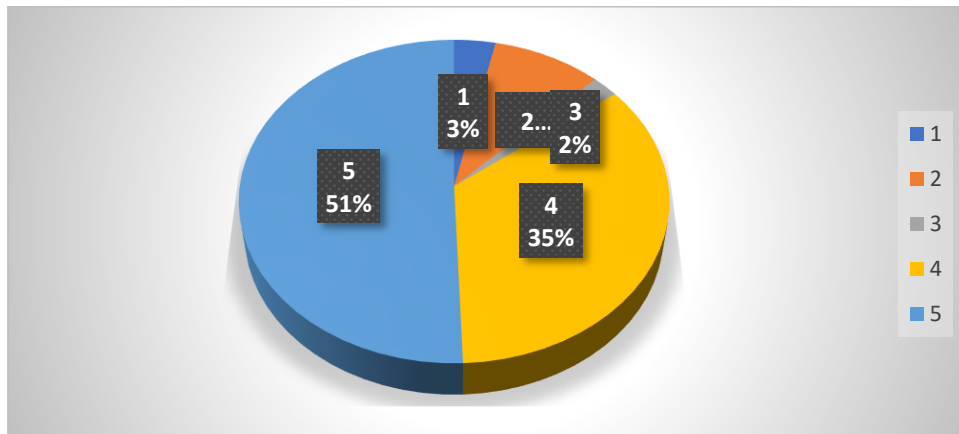
2. The depth of the course content is adequate to have significant learning outcomes.



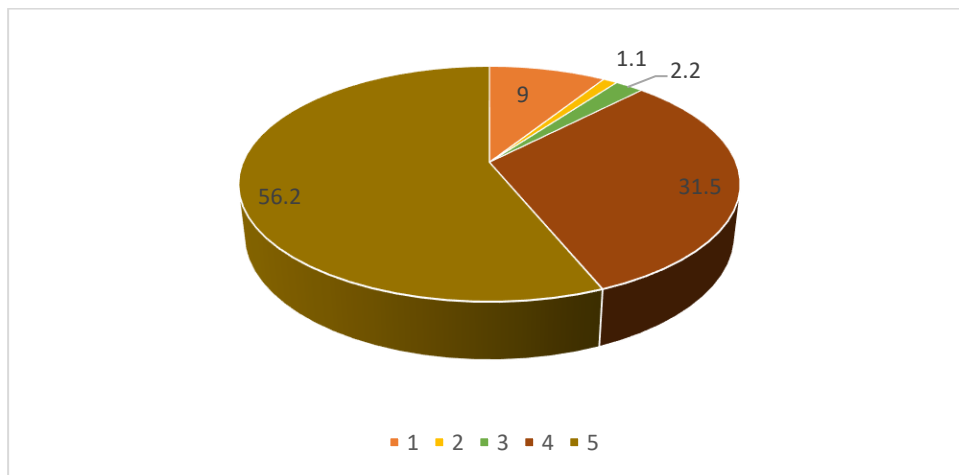
3. The syllabus is sufficient to bridge the gap between current global scenarios and academics



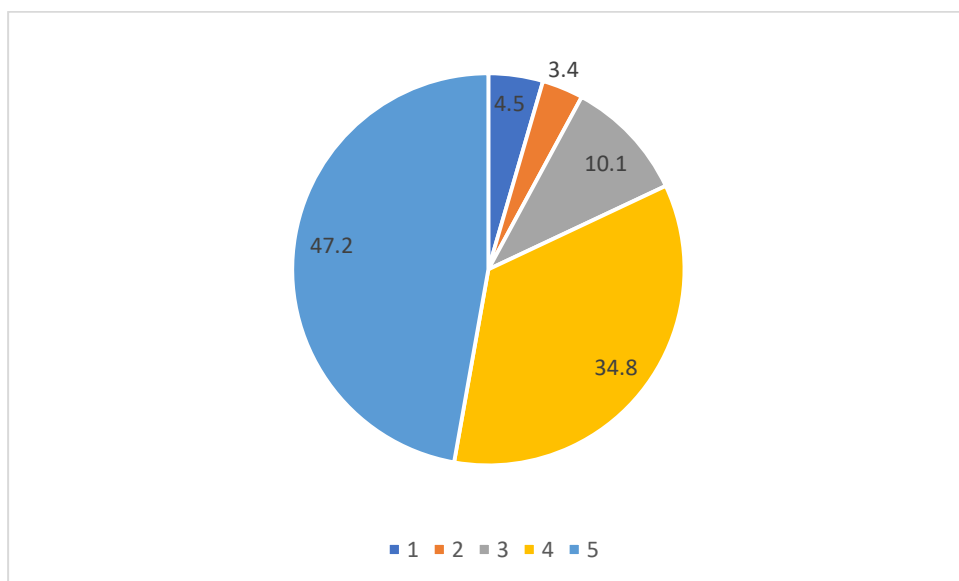
4. The coverage of syllabus is possible in the allotted time



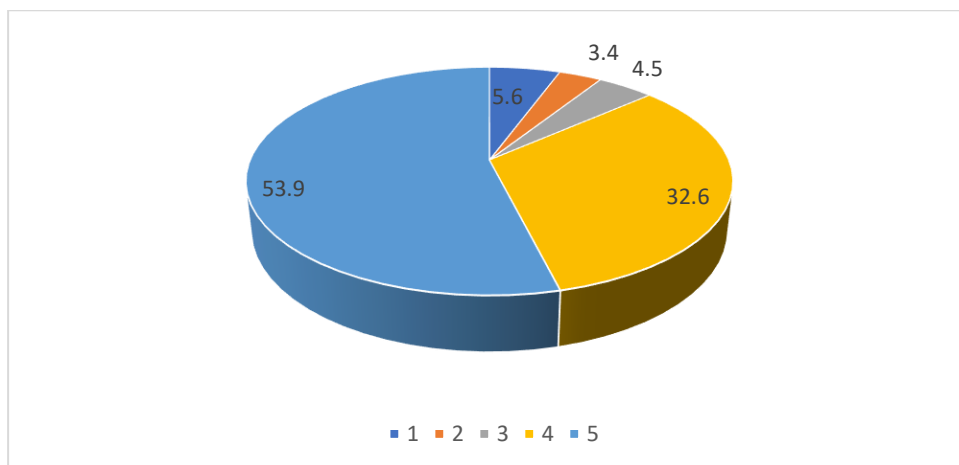
5. The units/sections in the syllabus are properly sequenced



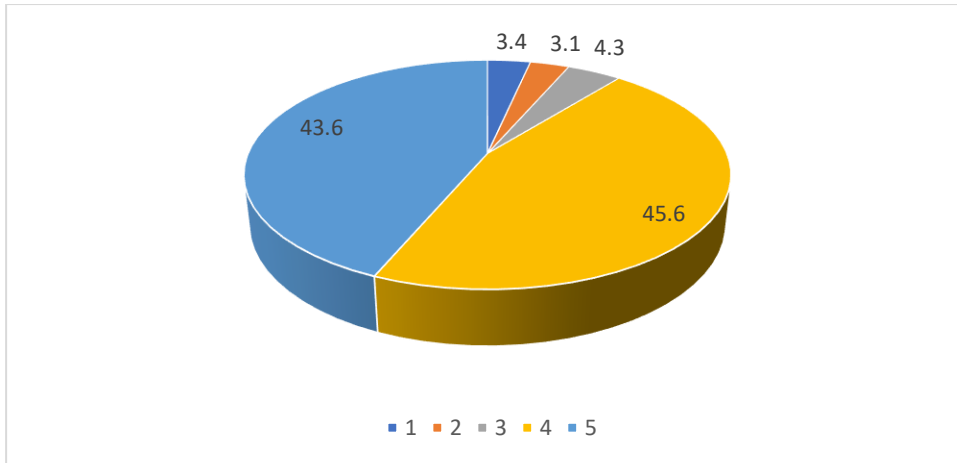
6. Sufficient reference materials and books are available for the topics mentioned in the syllabus



7. The Course/Syllabus of the subject is wide to increase knowledge and perspective in the subject area



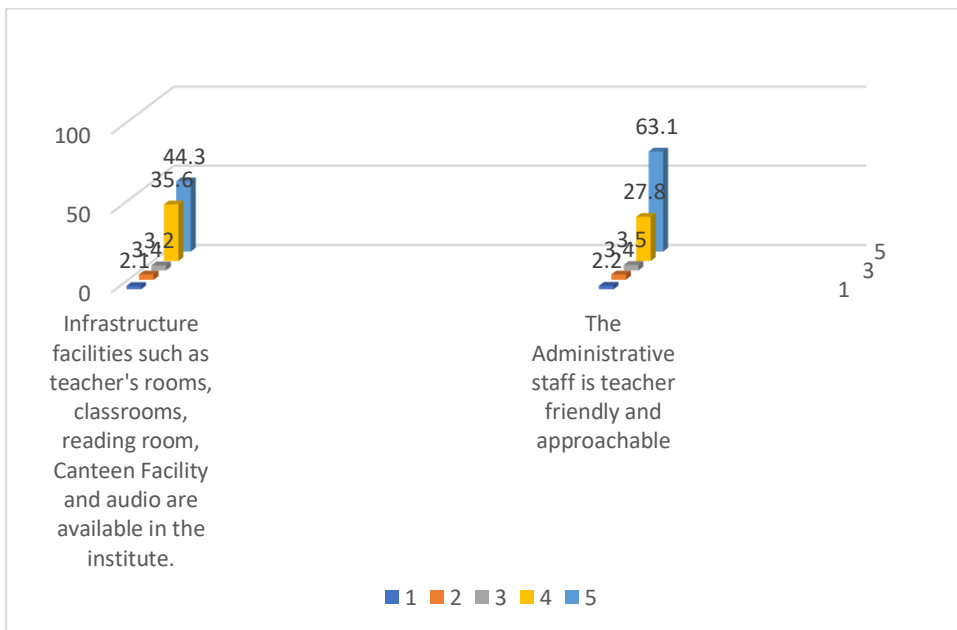
8. The Books prescribed/listed as reference materials are relevant, updated and appropriate



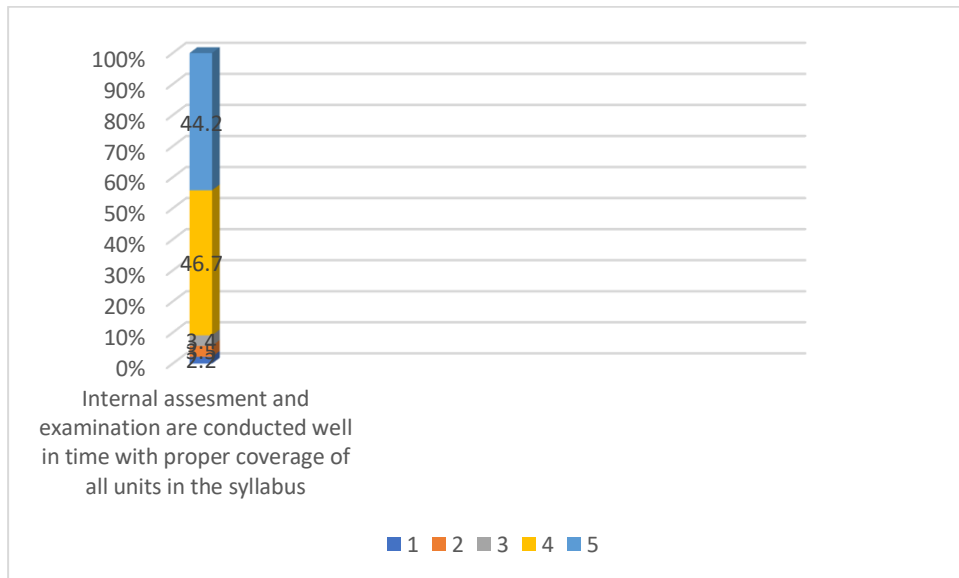
Feedback on Infrastructure facilities and administrative cooperation

9. Infrastructure facilities such as teacher's rooms, classrooms, reading room, Canteen Facility and audio are available in the institute.

10. The Administrative staff is teacher friendly and approachable

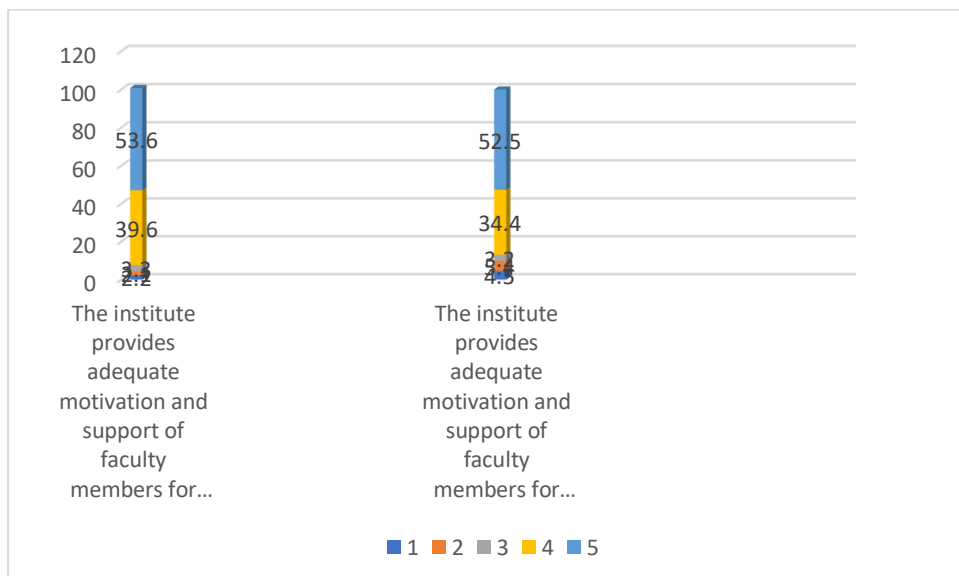


11. Internal assesment and examination are conducted well in time with proper coverage of all units in the syllabus



12 Technical staff is supportive to adopt new techniques/strategies of teaching such as seminar presentations, group discussions and learners participation

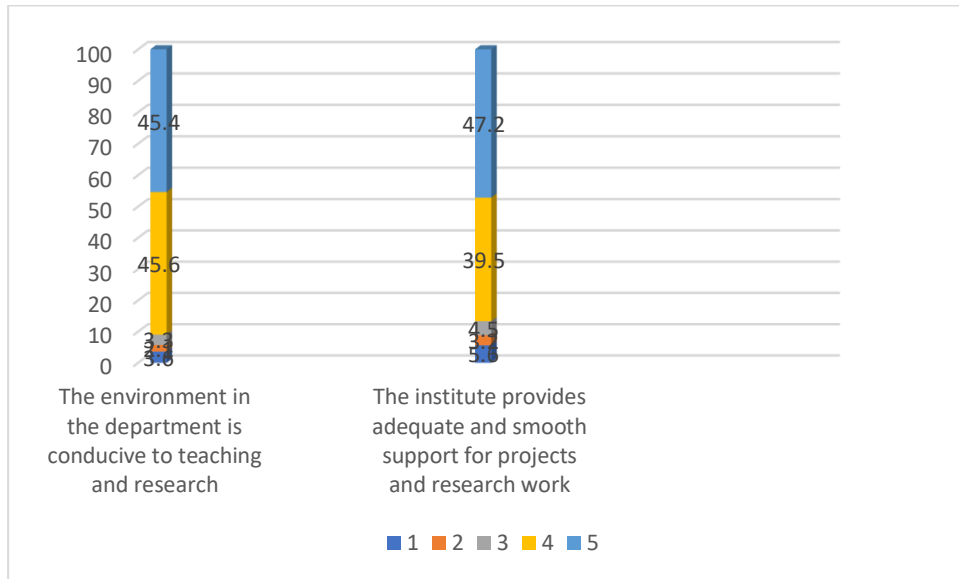
13.The institute provides adequate motivation and support of faculty members for upgrading their skills and qualifications.



Feedback on Research environment

14The environment in the department is conducive to teaching and research

15 The institute provides adequate and smooth support for projects and research work.




Principal
Iswar Sarani Degree College
University of Allahabad
Prayagraj